

Service Bulletin

Machinery Affected: *Cyber[®] A/T Saws*
Document: **SB189**
Title: **Replacing a CTC Screen With a PHM Model**
Applies To: **CTC Model, PHM Replacement**
Distribution: **Customers, Upon Order**



Copyright © 2009 MiTek[®]. All rights reserved.

MiTek
Machinery Division
301 Fountain Lakes Industrial Drive
St. Charles, MO 63301
Phone: 800-523-3380
Sales fax: 636-328-9222
Customer Service fax: 636-328-9218
www.mii.com

Item # and Rev.	SB189
Date Created	30 Sept. 2009
Created By	R. Tucker
Reviewed by	D. Crannick
Approved by	G. Pritchett
Revision Date	
Revised By	
Approved By	
Applicability	All saws w/ CTC model
Effectivity	??

Purpose and Scope

For customers that are replacing any previous CTC models with a CTC touch screen model PHM (PN 504545), follow these instructions to remove the older CTC screen, and install, setup, test, and calibrate the new PHM model.

This document applies only to Cyber saws and Cyber A/T saws with a touch screen monitor and a stand-alone computer. It does not apply if the computer is being purchased from MiTek at the same time (For example, in the case of an SB160 purchase.)

Overview

The parts included in this kit are shown in Table 1. Please ensure all parts are present before starting this procedure.

Table 1: Parts in XX


Qty.	Part Description	Part #
1	CTC model PHM touch screen	504545
1	Service Bulletin document	SB189

If you have any questions, call MiTek Machinery Division Customer Service at 800-523-3380.

Procedure




Electrical Lockout/Tagout Procedures

WARNING	
	<p>ELECTROCUTION HAZARD!</p> <p>Verify that all power to the machine has been turned off and follow approved lockout/tagout safety procedures before performing any maintenance.</p> <p>All electrical work must performed by a qualified electrician.</p> <p>If it is absolutely necessary to troubleshoot an energized machine, follow NFPA 70E for proper procedures and personal protective equipment.</p>

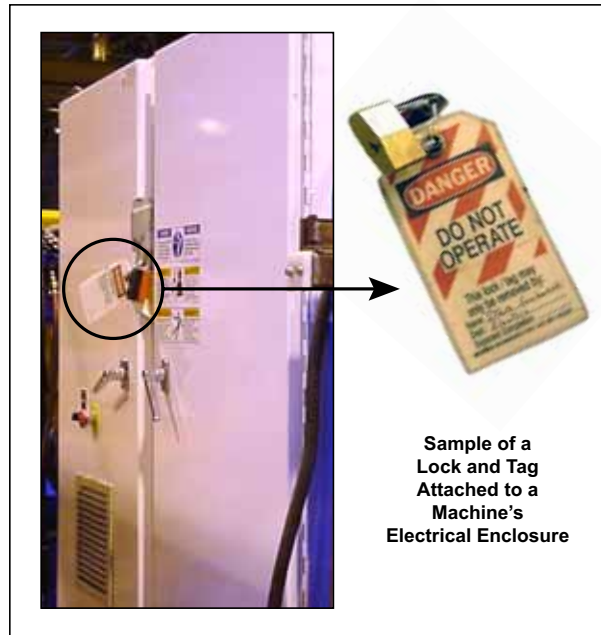
When Working on a Machine Outside the Machine’s Main Electrical Enclosure

Before performing maintenance on any machine with electrical power, lockout/tagout the machine properly. When working on a machine outside of the machine’s main electrical enclosure, not including work on the electrical transmission line to the machine, follow your company’s approved lockout/tagout procedures which should include, but are not limited to the steps here.

1. Engage an E-stop on the machine.
2. Turn the disconnect switch handle on the machine’s main electrical enclosure to the “off” position. See Figure 1.

WARNING	
	<p>ELECTROCUTION HAZARD.</p> <p>When the disconnect switch is off, there is still live power within the disconnect switch’s enclosure. Always turn off power at the building’s power source to the equipment before opening this electrical enclosure!</p>

3. Attach a lock and tag that meets OSHA requirements for lockout/tagout.

Figure 1: Lockout/Tagout on the Main Electrical Enclosure**When Working on a Machine Inside the Machine's Main Electrical Enclosure or in the Electrical Transmission Line to the Machine**

Before opening the main electrical enclosure, or attempting to repair or replace an electrical transmission line to the machine, lockout/tagout the machine properly. Follow your company's approved lockout/tagout procedures which should include, but are not limited to the steps here.

1. Engage an E-stop on the machine.
2. Turn the machine's disconnect switch to the "off" position. This is usually required to open the main electrical enclosure's door.
3. Shut the power to the machine off at the machine's power source which is usually an electrical service entry panel on the facility wall. One example of a locked-out power source panel is shown in Figure 2.
4. Attach a lock and tag that meets OSHA requirements for lockout/tagout to the electrical service entry panel.
5. Open the door to the enclosure in which you need access, and using a multimeter, verify that the power is off.

Figure 2: Lockout/Tagout on the Power Source Panel

Replacing Touch Screen

1. Remove old touch screen monitor.



Prior to removing the remaining two clips make sure someone is holding the monitor to prevent it from falling out of the enclosure. Remove the monitor from the enclosure and place it in a safe location out of the way.

- a) To remove the previous touch screen, unplug the power cord and then disconnect the power cord plug (green plug with two wires), monitor cable, and 9-pin serial cable from the back of the previous touch screen.
- b) Locate the 8 screw clips that secure the front bezel to the mounting box frame.
- c) There are two screw clips on each side, top, and bottom. Using a Phillips screwdriver remove all but two clips (one on each side of the monitor).
- d) Remove the final two clips while holding the monitor.



2. Install new model PHM touch screen monitor.

To install the new monitor, perform the previous steps in reverse order.



Take care not to over tighten the screws because the bezel screws can easily be stripped and may require vendor repair. MiTek will not be responsible for these repairs.

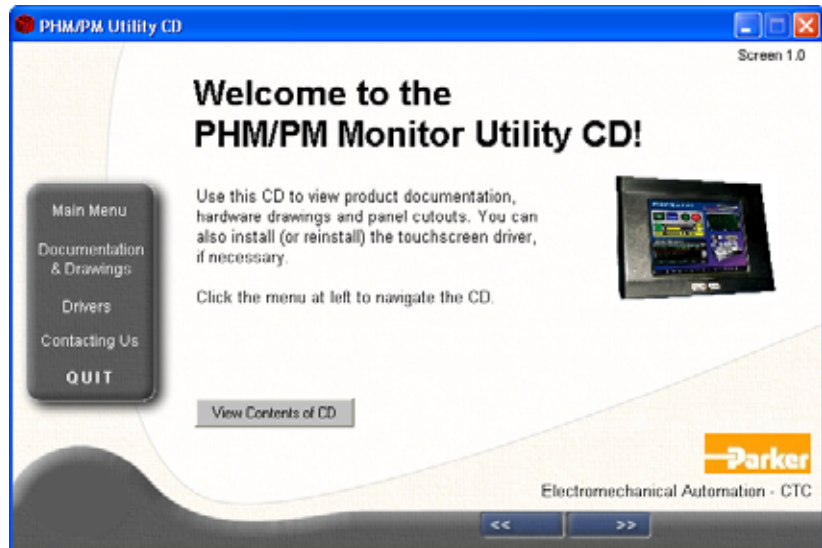
3. Remove old monitor touch driver.

Note: You will need to install a keyboard and mouse to be able to remove the old touch driver from your PC.

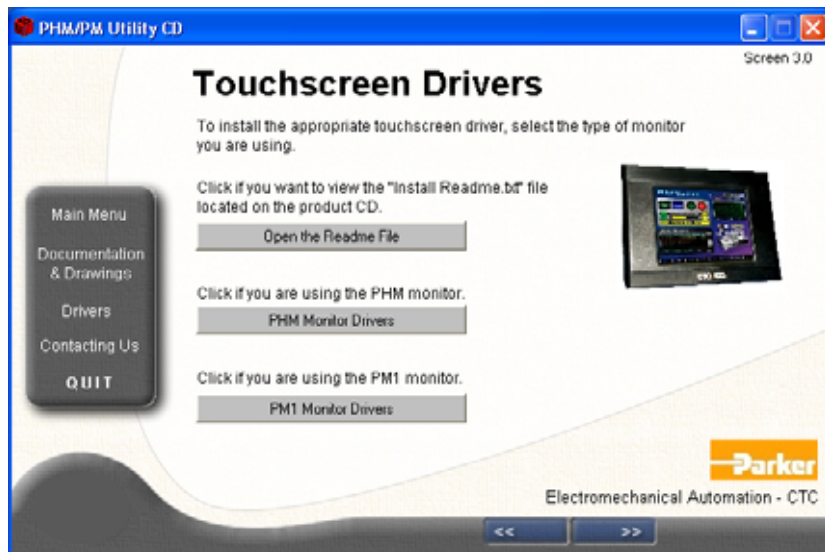
- a) From Windows XP desktop, go to *Start>Control Panel>Add/Remove Programs*, and press ENTER
- b) After Windows creates a list of installed programs, locate the program named *Universal Pointer Device Driver (UPDD)*.
- c) Highlight and remove this program by clicking the CHANGE/REMOVE button. After the program is removed it should disappear from the list.

4. Load new touch drivers from CD.

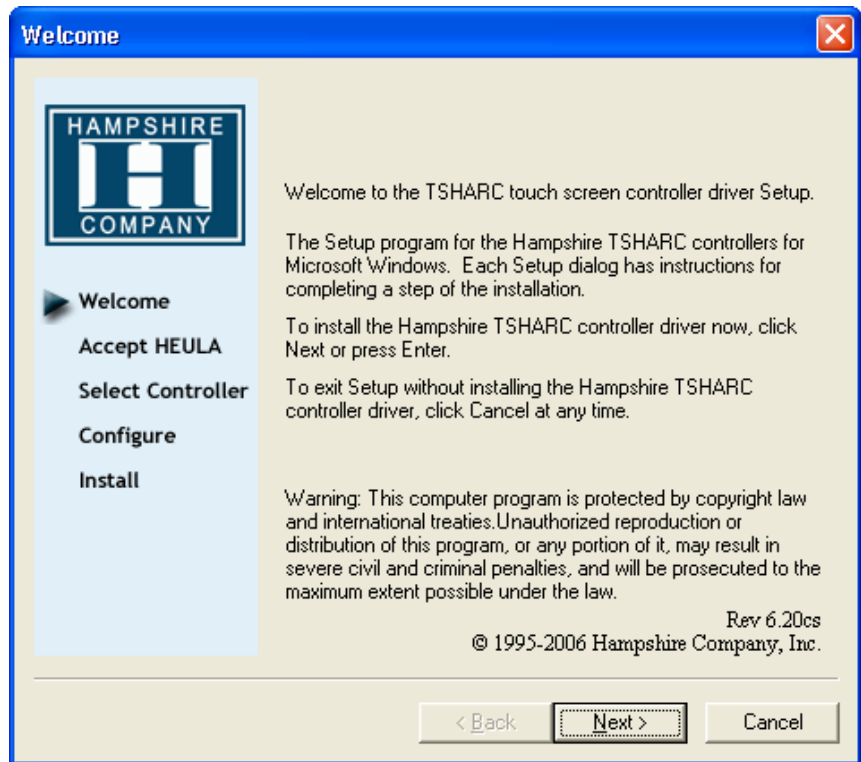
- a) Insert the CD that came with your monitor into the CD-Rom Drive. The CD should auto-launch the program. If not then open the contents of the CD and double click *PHMCDmenu.exe*. The following menu should appear:



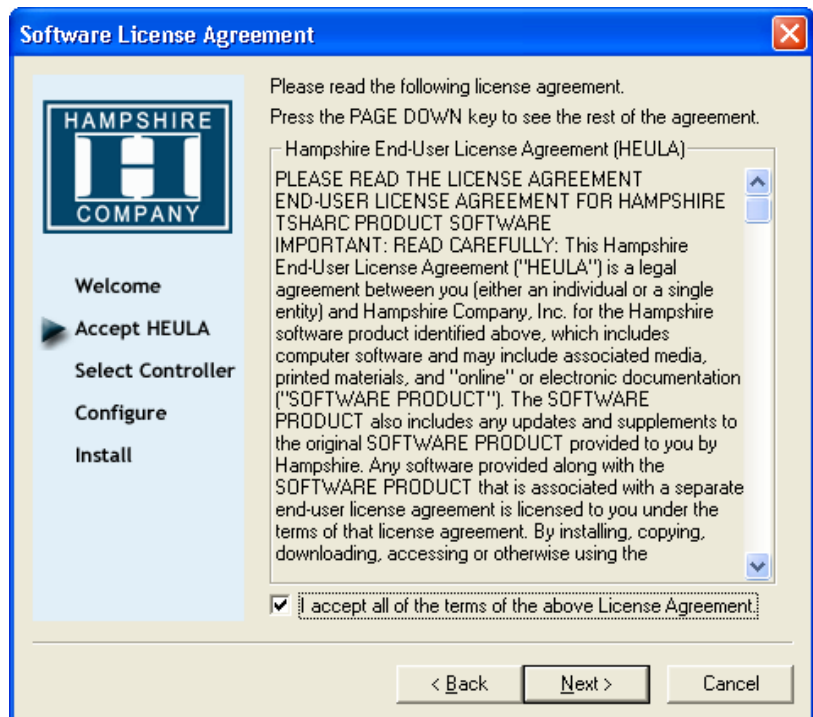
- b) Click on *Drivers* at the left side of the screen in the grey menu. The following screen will appear. Click the *PHM Monitor Drivers* button located in the middle of the screen.



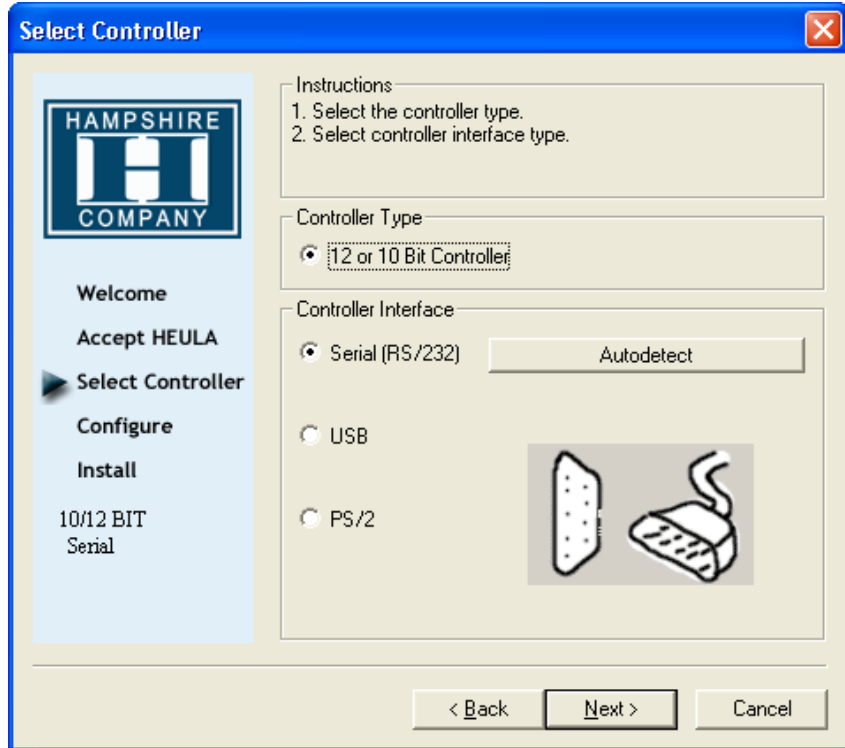
c) The following screen will appear. Click *Next*.



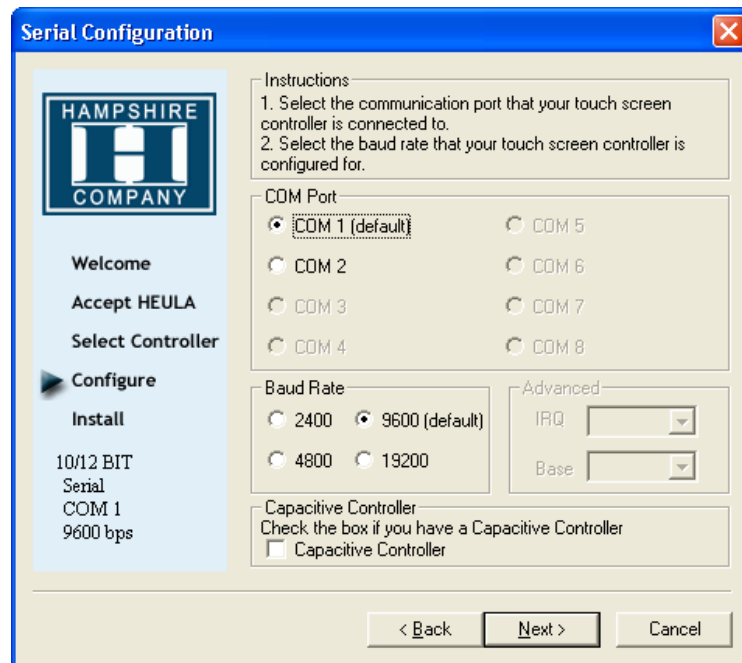
d) Check the *Accept* button for the license agreement statement. Click *Next*.



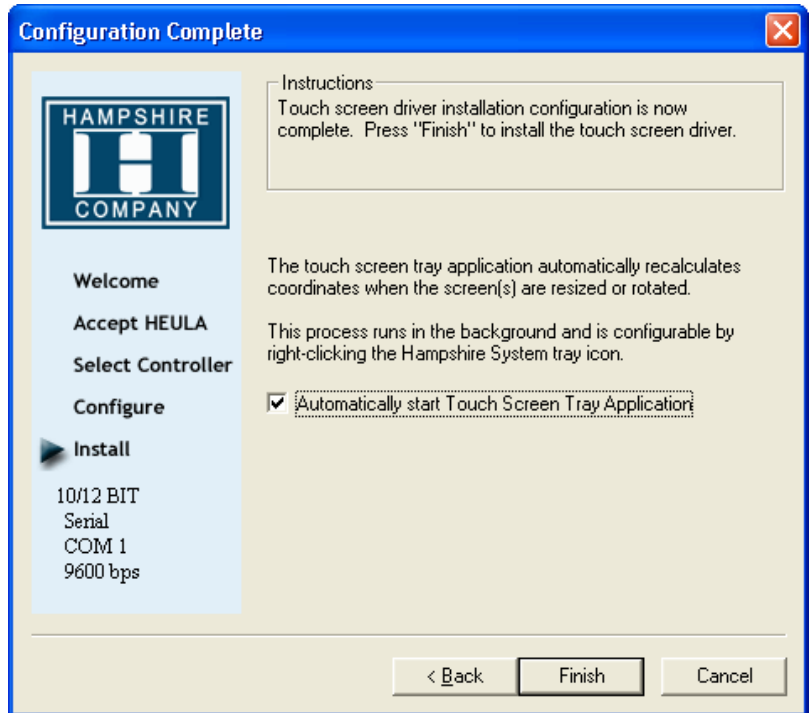
- e) Check *12 or 10 Bit Controller Type* and *Serial (RS/232) Controller Interface*. Click *Next*.



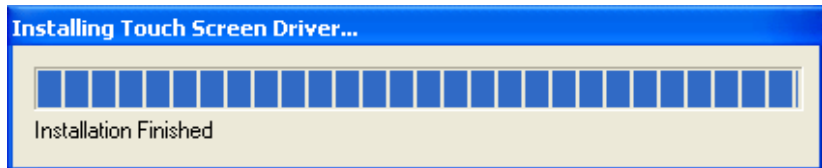
- f) Check *COM 1 (default)* and *9600 Baud Rate (default)*. Click *Next*.



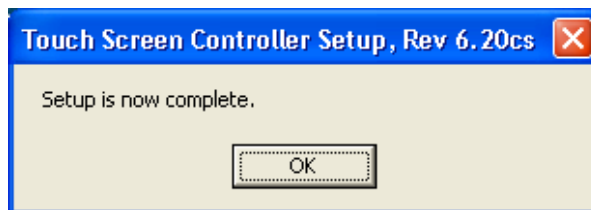
- g) Check *Automatically start Touch Screen Tray Application*. Click *Finish*.



- h) After Clicking on *Finish*, the driver will install and tell you when it is complete.



- i) When you get the *Setup is now complete* message, click *OK*.
- j) Reboot your computer.

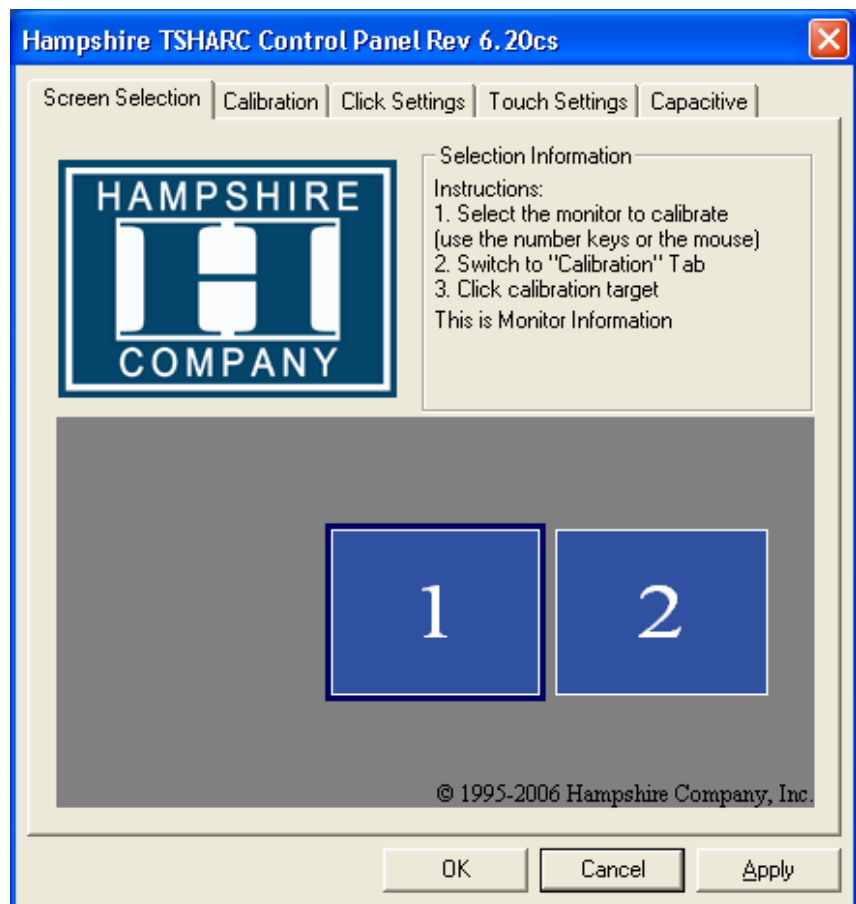


Note: Copy the contents of the CD to your Computer for future needs. Place a new folder on the C-Drive and copy the CD to this new folder. Keep this disk in a safe location. This is your only copy and may be needed in the future should something happen to your computer.

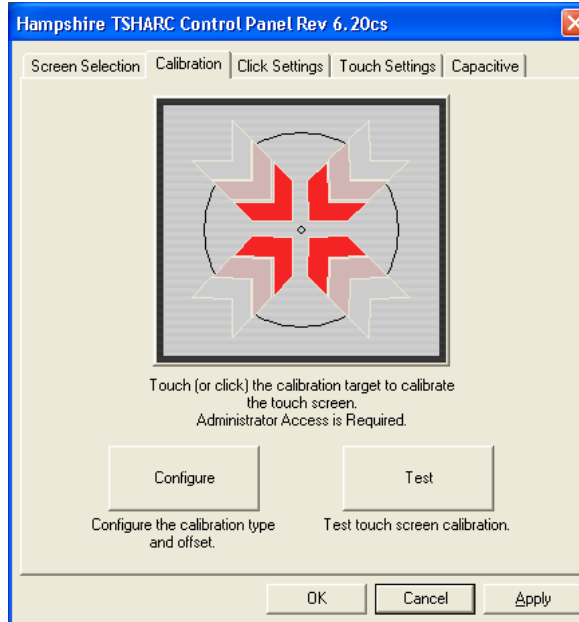
5. Test and calibrate new touch monitor.
- a) Before calibrating the pointer, make sure it works first. Touch the screen and see if the pointer moves. Don't be concerned if it doesn't move under your finger just yet. The important thing is that when you touch the screen it responds. If not repeat previous step.

If this doesn't resolve the issue please contact MiTek for assistance.

- b) To calibrate the touch screen pointer, go to *Start>All Programs>Hampshire TSHARC Control Panel* and press ENTER.

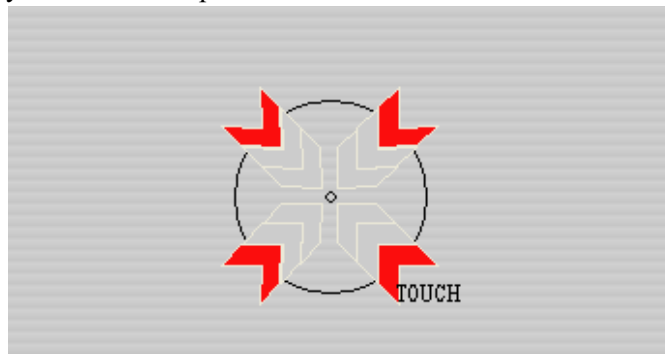


- c) Select the *Calibration* tab at the top. Press *Test* button to begin.



You only have a short amount of time to press each target. If you do not react fast enough or the screen does not sense your finger then a time-out will occur and the calibration is aborted. Do not make any other changes in the control panel (Default settings work fine).

- d) The screen will go blank and display the bulls-eye symbol on the screen. Touch this point and hold it down until the next point appears. Then press that point and hold it down. A total of four bulls-eye targets should appear (one after another) until they are all pressed. This teaches the monitor your calibration points.



6. The screen should be working properly. If you are still having trouble getting anything to respond, contact MiTek for assistance.

END OF SERVICE BULLETIN